



SKM-Cirrus™

Surveillance Management Software

Quick Start Guide

Version 2.6.3



Global Leader in IP Video & Physical Security Information Management

3852 Dulles South Court, Suite I Chantilly, VA 20151 USA

www.videoNEXT.com

www.CAVU.me

This page intentionally left blank.

videoNEXT Network Solutions, Inc.
3852 Dulles South Court, Suite I
Chantilly, Virginia 20151, USA

No part of this document may be copied or reproduced in any form or by any means without the prior written consent of videoNEXT.

videoNEXT makes no warranties with respect to this document and disclaims any implied warranties of merchantability, quality, or fitness for any particular purpose. The information in this document is subject to change without notice. videoNEXT reserves the right to make revisions to this publication without obligation to notify any person or entity of any such changes.

Trademarks or brand names mentioned herein are trademarks or registered trademarks of their respective owners.

THE INFORMATION IN THIS PUBLICATION IS PROVIDED ON AN AS-IS BASIS. videoNEXT DISCLAIMS ALL WARRANTIES WITH REGARD TO THIS SOFTWARE, INCLUDING ALL IMPLIED WARRANTIES OF MERCHANTABILITY AND FITNESS. IN NO EVENT SHALL videoNEXT BE LIABLE FOR ANY SPECIAL, INDIRECT OR CONSEQUENTIAL DAMAGES OR ANY DAMAGES WHATSOEVER RESULTING FROM LOSS OF USE, DATA OR PROFITS, WHETHER IN AN ACTION OF CONTRACT, NEGLIGENCE OR OTHER TORTUOUS ACTION, ARISING OUT OF OR IN CONNECTION WITH THE USE OR PERFORMANCE OF THIS SOFTWARE.

This page intentionally left blank.

INSTALLATION

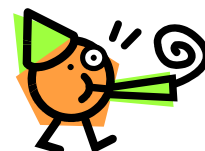
1.1. Preparation

System Requirements:

- Mac computer with Intel-based CPU
(“Mac mini” is optimal, while iMac or MacPro may be used)
- 1 GB of RAM (2 GB is strongly recommended)
- 300 MB of hard drive space
- Mac OS X 10.6.4 or later with all the recent updates installed
- Safari 5 browser for Mac

IMPORTANT: The video-archive function needs an additional dedicated hard drive which may be attached either through USB or FireWire.

Please note that the software will create an “Cirrus Admin” user account during installation. Please change the password on this account to protect your security.



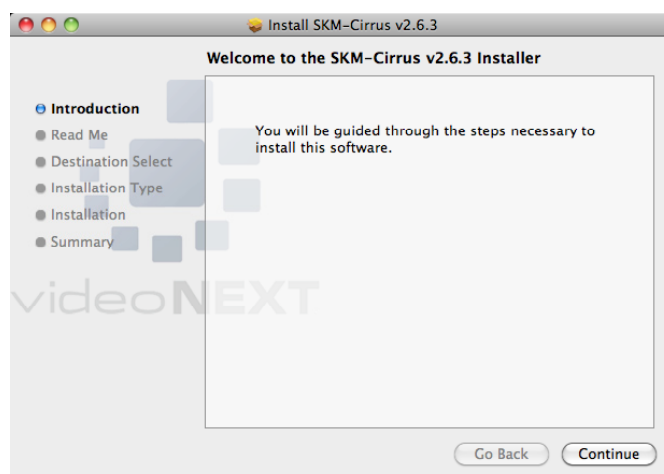
It is always a good idea to have your Mac password protected.

1.2. Install

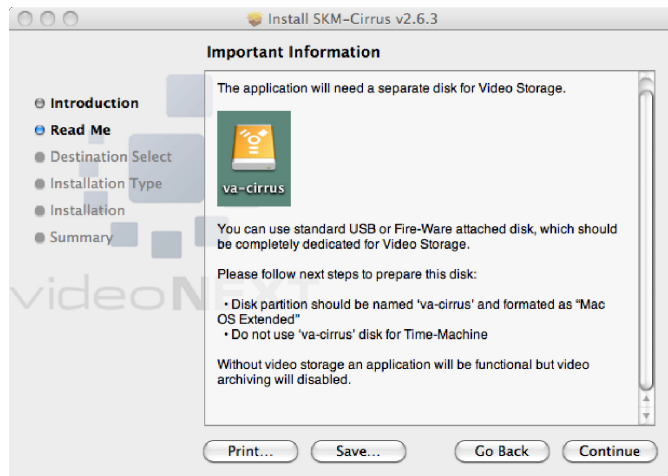
Download the SKM-Cirrus software. Double-click “va-cirrus-xxxx.pkg” package file and the installation process will begin.

If you do not see the Application Installation window, double-click the SKM-CIRRUS pkg icon in the download tray to open it.

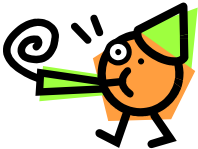
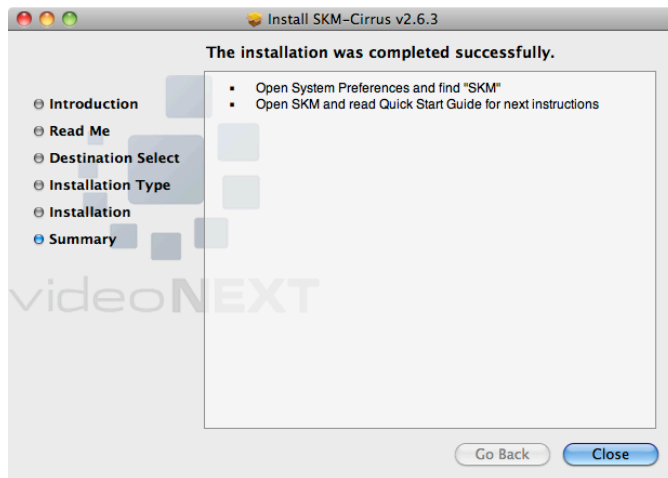
The Installation wizard will walk you through the next steps.



IMPORTANT: The next screen requires that you to perform a series of steps relevant to the video storage configuration. This is needed for the successful installation. Video-storage is an optional feature, which may safely be skipped on the initial installation, and may be added later at any time.



You should receive a confirmation that the software was successfully installed:

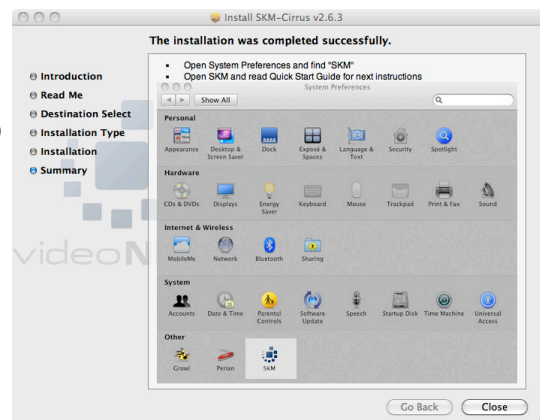


To be notified of updates & patches, register your software under the “Genera” tab of licensing.

1.3. Starting up SKM-Cirrus

After you have finished the installation process, you will need to start the SKM-Cirrus software

Please go to your System Preferences on your Mac, and open SKM-Cirrus panel in the “Other” section on the bottom left. You may be prompted for your Mac user name and password.

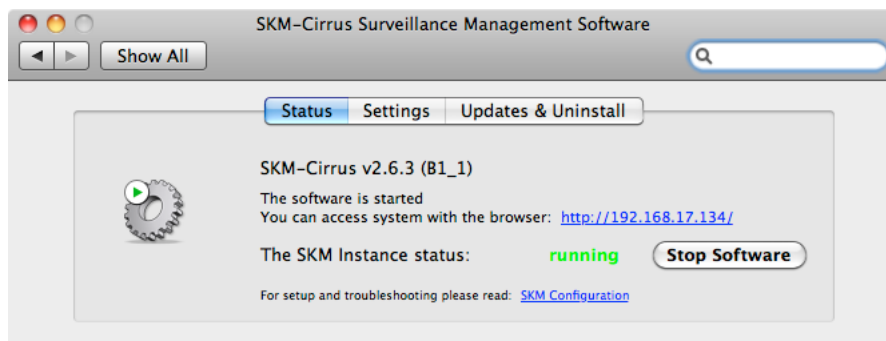


In the SKM-Cirrus start panel please find the “Start Software” button and start the software

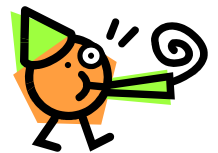
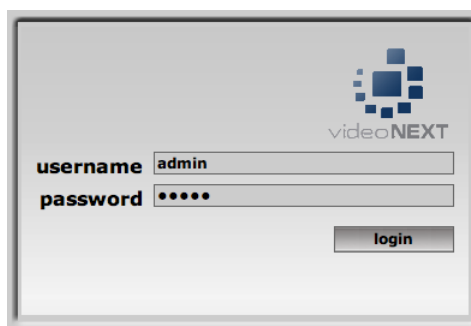


Once the application software is started, you will see the control panel “status” has changed to “running”, and a web-link is provided to open the software in your Safari browser.

Click on the provided link (or open it on different computer) and the Login Screen will appear.



By default, your username will be set to “admin” and the password set to “topse”. Please change the password as soon as possible for security reasons (see “Configure” chapter below).



Don't forget, your user name will be set to “admin” & the password to “topse” - Remember to change them!

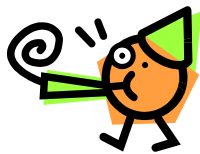
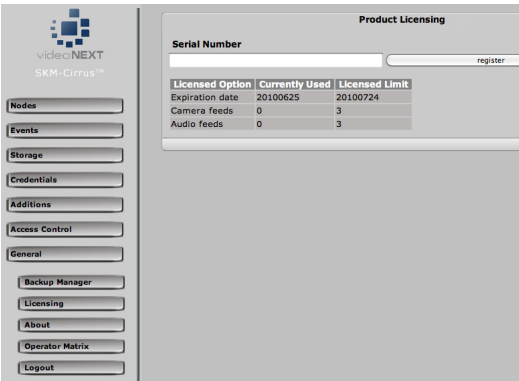
2

CONFIGURE

2.1. Install License

Once you have installed SKM-Cirrus, you will need to install (or replace) your license. Please login to your system as the “admin” user and open the “Admin GUI”.

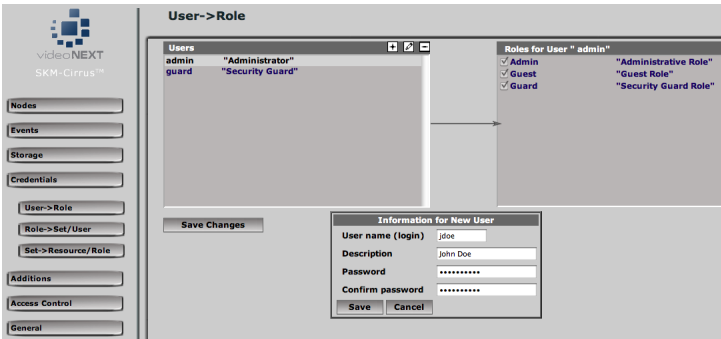
In the Administrative side of the software, please click on “System” icon in the top menu and then on the “Licensing” shortcut in left panel to open Licensing screen. Click on “Change” and enter your SKM-Cirrus Serial Number (also known as license) and click on “Activate” the button. You computer **MUST** have an internet connection, since the license activation requires a connection to our secure activation server.



For security reasons you should change your user names and passwords immediately after system installation

2.2. User Management

By default, SKM-Cirrus creates two user accounts: “admin” and “guard”, both with “topse” as the password.



For security reasons, you should change passwords on both accounts immediately after system install.

To add and manage the users of your system, please click on the “System” icon in the top menu of “Administration”, and then click on the “Users” shortcut on the left.

Users of SKM-Cirrus should belong to one of next roles:

- Admin: gives full control over system security, functionality, and configuration
- Guard: gives full access to Operator Matrix, but does not have any configuration modification permissions
- Guest: allows to review live video on cameras and see real-time events, but does not have any permission to review archived video content or to configure the system

Normally, you should create the users within the “Guard” role for the “circle of trust”, and “Guest” for somebody who would like to take a glance on your system, but will not extensively review content or control your cameras.

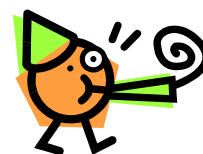
2.3. Publish System to Internet

This step is optional and provides you with information on how to publish your SKM-Cirrus system onto Internet. This also may depend on the Network Infrastructure.

You should operate your SKM-Cirrus system behind your computer's the firewall. You will need to open a few ports to have it accessible from the outside of the firewall

Port	Protocol[s]	Comments
80 / 8000	TCP	HTTP server. Port 80 is a standard port, but if your Internet Service Provider blocks port 80 - please use port 8000 instead (port number will have to be used in URLs in this case. Example: http://server:8000/)
8554	TCP+UDP	RTSP Video Streaming. Please make sure both TCP and UDP are open.
10000	TCP	Signals and notifications.

To access your system from the Internet, you may want to assign it a readable domain name, which may be obtained from free service like DynDNS.org or similar, which will dynamically assign readable domain names to your server over network. For example you can register the name “homesecuritybase” and access your system as “<http://homesecuritybase.dyndns.org:8000/>” from the browser.



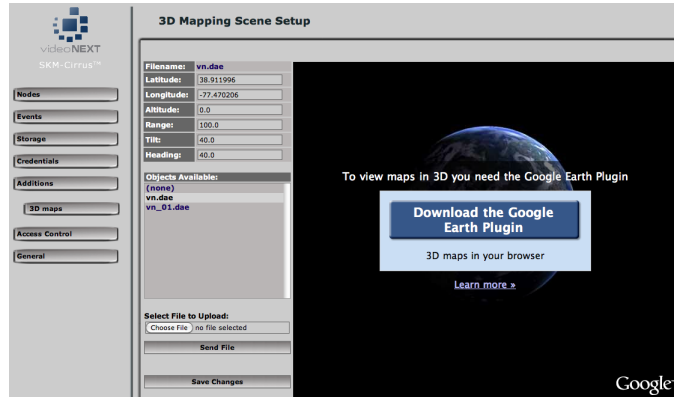
Administrator user should not be routinely used for system operation, but rather for occasional maintenance

2.4. Configure Google Earth functionality

This step is optional and will only be needed if you want to use GEO-tagging on your cameras and iPhone.

First, you will need to make sure the Google Earth browser plugin is installed on every computer where you plan to use this functionality.

The “download” link will be provided automatically to you by SKM-Cirrus the first time you begin to use the software. You’ll be given an opportunity to download it from the Google site and return back to your SKM-Cirrus screen.



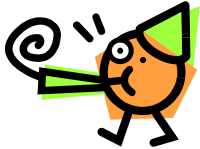
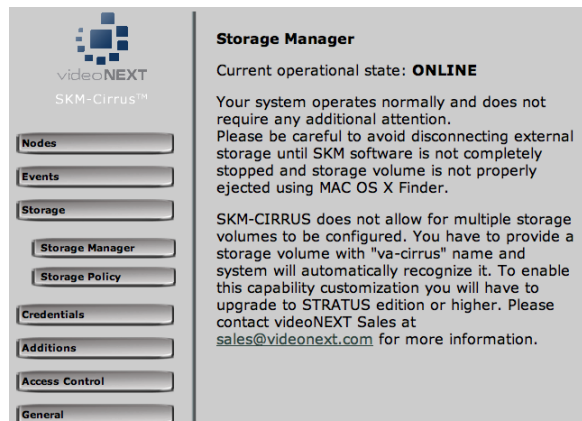
Next, you will need to register “Google Earth API Key” here: <http://code.google.com/apis/maps/signup.html> Please make sure to provide a correct URL for your site (example “<http://homesecuritybase.dyndns.org:8000/>” in section 2.3 above) into “My web site URL” field provided. This service is free to any Google Mail (Gmail) account holder. Pay attention if you use a different URL to access your system. Google Earth only allows one URL per license key.

Once you generated Google Earth API Key - please go to the SKM-Cirrus Administration panel, click on “System” icon on the top, select “Identity” shortcut on the left, click on “Edit” and enter API Key into correspondent field, click on “Save”.

You will have to refresh any browsers already using Google Earth functionality inside SKM-Cirrus for these changes to take effect.

2.5. Configure Storage

SKM-Cirrus will perform video recording (archiving) automatically of your video (surveillance) automatically if you provide a dedicated storage device attached through USB or FireWire. Your Mac may have secondary hard drives which can be used. Do not use your OS X drive.



GEO-tagging is adding the longitude & latitude coordinates of your camera on your Google Earth map via the SKM-Cirrus 3D mapping capability.

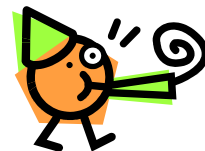
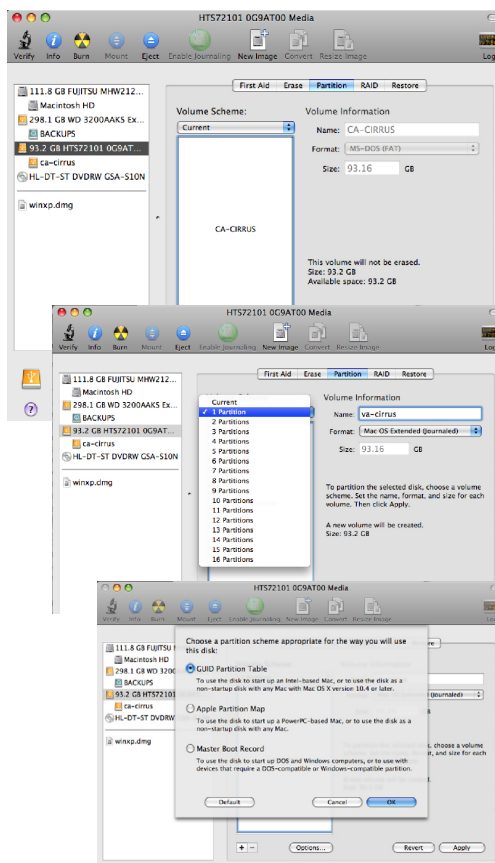
Note: SKM-Cirrus will continue to work and stream live video if storage is not provided or is disconnected. This condition will be indicated by “MISSING” message in the in the storage manager menu of the administrator view.

SKM-Cirrus will automatically recognize one volume named “va-cirrus”, which will be automatically configured as a video storage.

If you connect USB or FireWire attached storage device and it is already formatted with Apple’s “Mac OS X (extended)” format - then you do not need to change anything but volume name. This may be done by one click on volume’s name to select it, and secondary click (two clicks) on name (give it some time, it is **NOT** double-click) to get it into “editor” mode, type “va-cirrus”, hit “enter” and your are done.

If you have an empty storage device or if it is not formatted as “Mac OS X (extended)”, please follow the procedure below:

- Open the “Disk Utility” proram (Applications->Utilities)
- Point to your storage device, open “partition” tab. Here you can confirm the format (“MS-DOS FAT” on the picture)
- PLEASE BE CAREFUL, in the next steps you will modify your storage device configuration, and you will delete any data stored on the device!
- Change “Volumes Schema” to “1 partition” as shown on the screenshot
- Enter name as “va-cirrus” into “Volume Information”
- Click on “Options.” down below and select partitioning schema to be “GUID Partition Table”
- Click “OK”
- Click “Apply” to start volume partitioning and formatting (it may take up to one minute on big storage devices)
- Close “Disk Utility”
- Answer “No” when you are asked if you want to use new volume or “Time Machine”



You may use the “Settings” tab of SKM-Cirrus control panel to set the service to start up automatically once your computer is powered up

The storage configuration is finished!

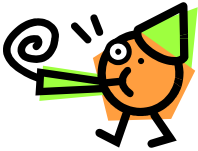
3

REGISTER CAMERAS

You need to connect your cameras to your local network. (These can be network or USB cameras.) Make sure you can get video from them. (Check the instructions that came with your cameras as they will have the configuration procedures.)

Please note next settings: Camera IP address or domain name / username / password for each camera. If your camera is Bonjour enabled (Axis Communications cameras) - you may skip IP address part, as automated discovery will be provided.

Once you have confirmed your cameras are working with their native interfaces it is time to add your cameras to SKM-Cirrus:



There are many great online instructions for installing your IP surveillance cameras and configuring them to your network

- Click on the “Video” button on the top menu.
- Click on the “Add” button to add your camera.

This will take you to the “Camera Add Wizard”

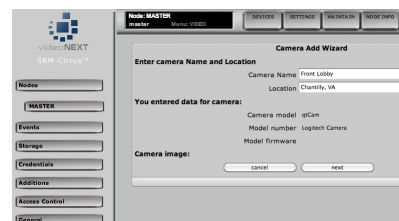
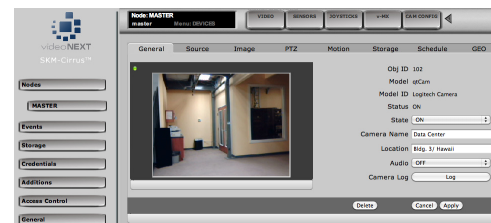
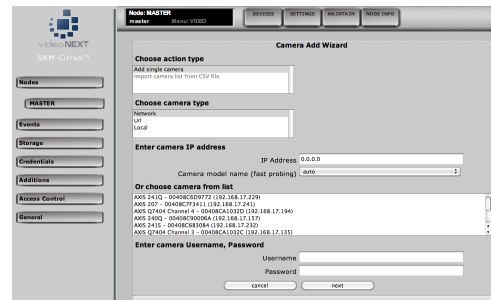
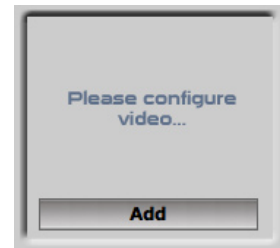
- If your camera supports Bonjour auto-discovery you will get a list of all your cameras in 2-3 seconds and you may click on the camera you want to configure. Otherwise, you will have to manually enter IP address or domain name for your camera

- Please see the dropdown menu for the camera models supported

- Enter username and password. (This needs to be established with the root camera interface.)

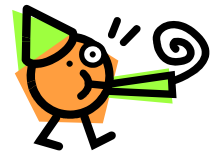
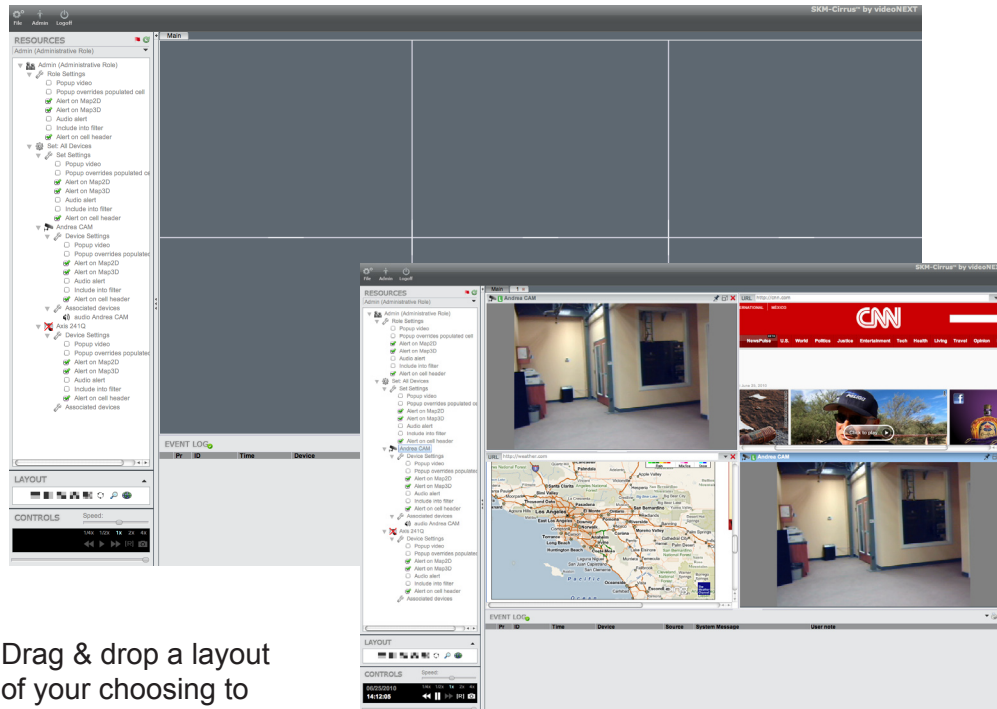
- Click “Next”
- The Wizard will show you a snapshot from the camera, so you can identify it visually and will display camera mode name, model number and firmware version
- If the camera identified is the right one, name the camera with it's location and click the “Next” button
- Repeat this procedure for all your cameras.

You can always adjust particular cameras parameters by clicking on camera image in left vertical strip and editing settings in multi-tabbed settings editor and clicking “Apply”.



WHAT'S NEXT?

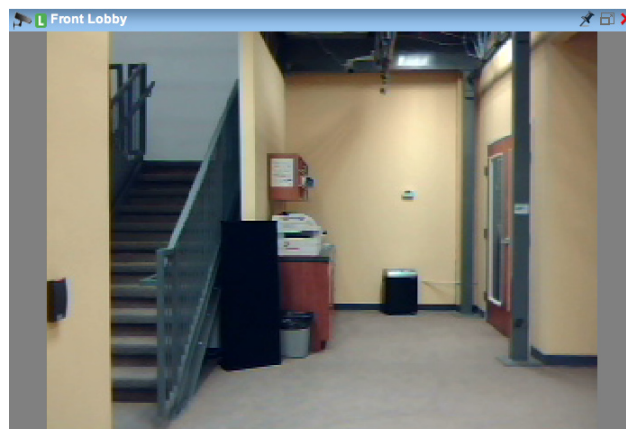
Open your browser and connect to SKM-Cirrus . If you login as a “guard,” user you will get into “MATRIX-2” screen directly, if you logged in as an “admin” user you will have to select “Operator’s Matrix” from the GUI list. The next screen will open up:



Try exploring the interface: most of items are draggable, resizable, & clickable.

Drag & drop a layout of your choosing to the main gray area (Workspace). Next, drag & drop camera[s] from the “Resources” panel on the left to the Workspace and their associated video will appear in real time. This can be done on the computer where SKM-Cirrus is installed, on another computer in your network or anywhere in the world, if you configured firewall as described in chapter 2.3.

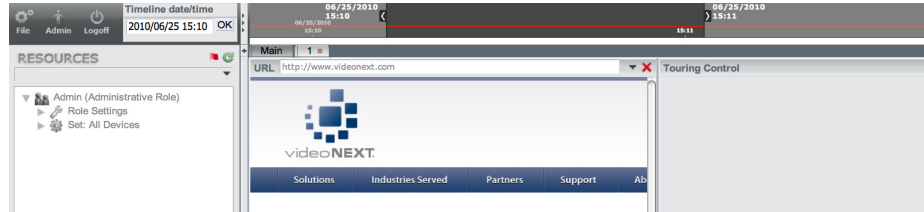
To retrieve recorded video, single click on the camera header which will turn blue.



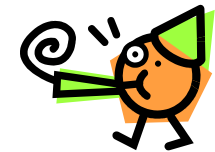
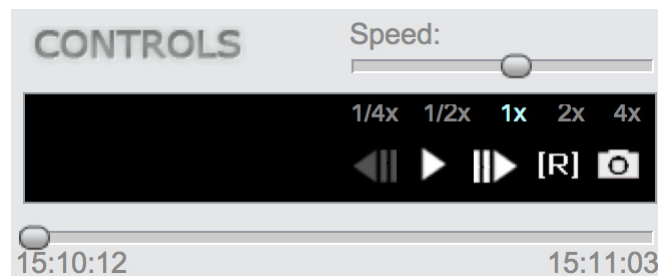
In the upper left corner of the header you will see a green "L" defining the video as a live view. Single clicking the green "L" turns it into a red "A" indicating that the video is now in playback / archive mode



This produces a timeline across the top of the workspace.



Use the "Control" panel on the bottom left to move the video in time.



Another interesting component to explorer will be Map 3D in "Layout" panel, which can be dragged & dropped into any cell for Google Earth interface with embedded cameras.

You can always select a camera in the "Resources" panel and click on "Track" icon in the 3D Map header to reposition map to particular camera. (You must have your cameras calibrated.) When you have an iPhone with "CAVU Pro" actively streaming video - it will follow it all the time while stream is active!

CONFIGURE YOUR IPHONE, IPOD TOUCH, & IPAD

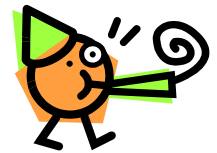
5

This is an optional feature and requires you to purchase the App from Apple's iTunes Store

You will need to install the CAVU Pro on your iPhone or iPad to interact with your SKM-Cirrus installation.

The CAVU Pro App will allow you to:

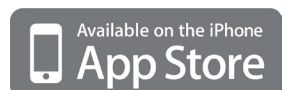
- Configure SKM-Cirrus system to connect
- Get full list of cameras into Matrix view (updated in real-time): portrait or landscape mode
- Select one of the cameras for a close up look (real-time / full frame)
- Control point, tilt, zoom (PTZ) cameras with a "finger swipe"
- Review archive (double-tap on video to activate, select "Google")
- Receive real-time alert notifications (events tab) and review associated media clips
- Provision with multiple SKM servers (Cirrus / Stratus / Altus supported) and perform fast switch
- Allow PTZ cameras control by presets (load preset / save preset)
- Allow real-time video streaming from iPhone camera to SKM with realtime review on another CAVU Pro enabled iPhone, iPad, iPod touch or any Mac or PC browser
- GEO-locate video-streaming iPhone on Google Earth in SKM-Cirrus as previously discussed



vStream is using the iPhone camera as a "surveillance Camera" and streaming live video back to the SKM-Cirrus system while also recording this video to your storage device (if you choose)

If you installed the "CAVU Pro" App - you will have to go to Settings->CAVU on your iPhone and program your SKM-Cirrus server IP (or domain name), port (80 or 8000), username and password, and then you are ready to start your application.

If you installed "CAVU pro" application - start it without any settings - it will prompt you to create one or more SKM server entries with similar settings (IP/port/name/password). Please pay attention to additional "vStream" option, which you have to enable if you wish to register your iPhone for video streaming from iPhone camera to SKM sever. The streaming will not start until you activate it explicitly through the [R] button as it is explained in next chapter.



6

SUPPORT

Register your software with us to receive enhanced support from our highly trained technical engineers.

Product Registration

Thank you for purchasing videoNEXT SKM product.

videoNEXT product registration is quick, easy and secure.

Your warranty is not affected by your decision to register or not, but your registration will allow us to serve you better over lifetime of your product.

Registration will allow you to access our Customer Portal and get latest updates and documentation for your product.

Please provide your:

Contact first name:

Contact last name:

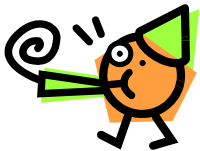
Email address:

Phone number (optional):

Street address (optional):

Product Registration

Please confirm license activation for serial number: 54645453242534634643345 for user Jack Appleseed (email: rydaka@gmail.com, phone: 555-555-5555, address: 1234 Main Street, Denver, CO 12345).



Please go to www.CAVU.me for FAQ and additional support instructions

If you require additional support, please go to www.cavu.me or www.videoNEXT.com for support instructions, FAQs, and more.

Email: support@videoNEXT.com

Please provide the following in your email:

1. Name
2. City, State, Country
3. Product and Serial Number
4. Hardware you are using
5. Detailed list of problems and issues with screen shots if possible
6. Country code, area code, & phone number

A technical support representative will record your request and respond as soon as possible.

Please visit our web sites for additional products and solutions.

To purchase the CAVU mobile surveillance app, please visit Apple's iTunes Store and search CAVU or videoNEXT.

© 2010 videoNEXT Network Solutions, Inc. All Rights Reserved Worldwide.

Apple, the Apple logo, iPod, iPhone, iPad, iTunes are trademarks of Apple Inc., registered in the U.S. and other countries.

web: www.videonext.com | www.cavu.me
media: www.youtube.com/user/videonext1
email: support@videonext.com

videoNEXT Network Solutions, Inc.
3852 Dulles South Court, Suite I



